

Š O L S K I  C E N T E R

Š K O F J A L O K A

Višja strokovna šola za strojništvo in lesarstvo



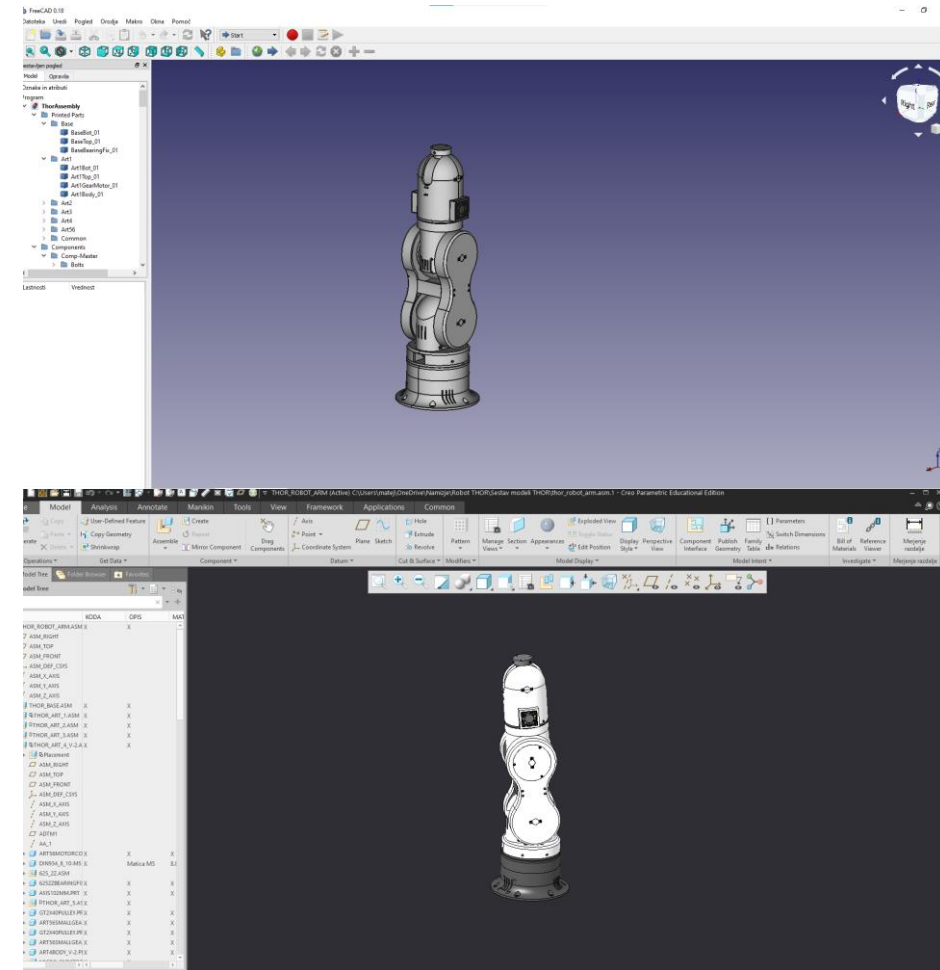
**LTТА – Learning Trainig and Teaching Activity**

ART3 and ART4  
CHANGES AND ASSEMBLEY

Matej Meglič

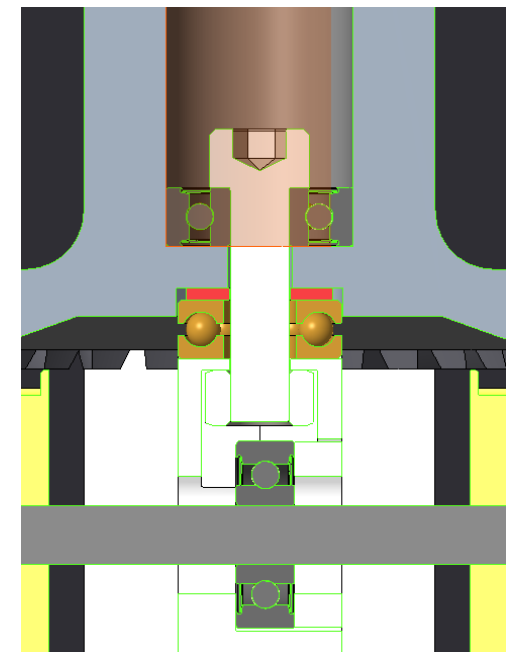
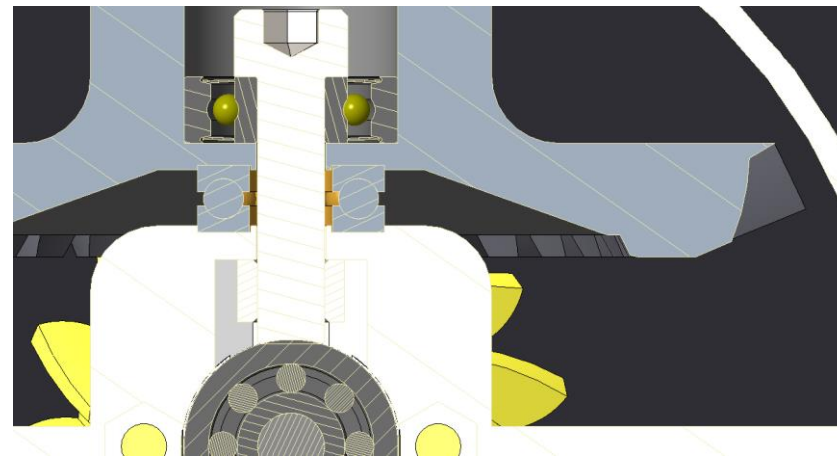
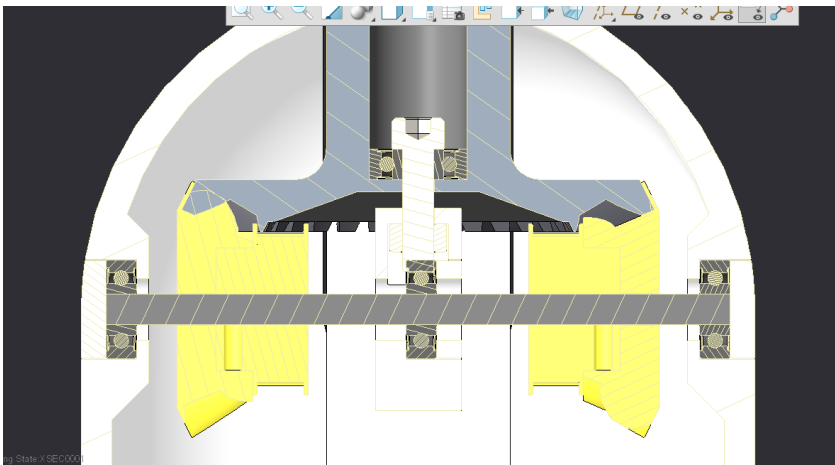
# Model Overview

- Overview of models
- Sharing of ideas for model changes.



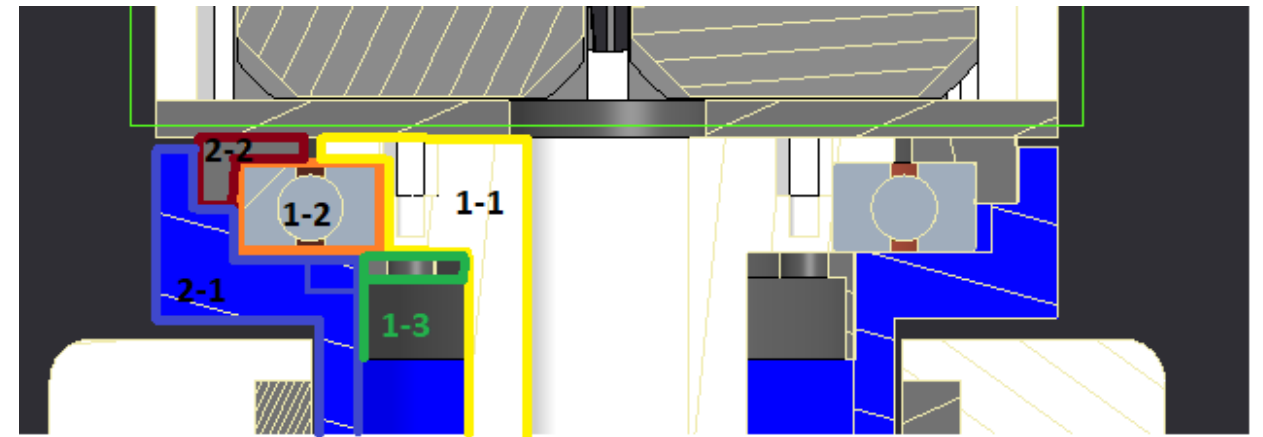
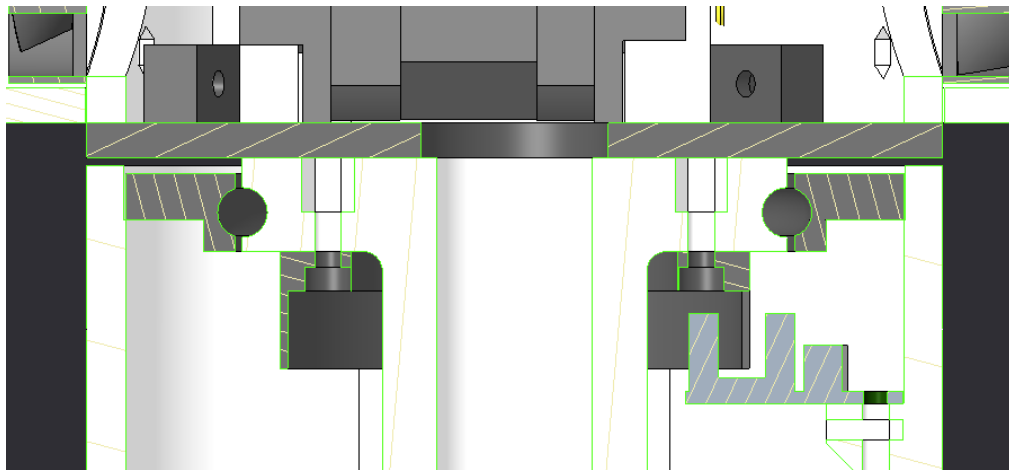
# Changes in ART4

- Adding of axial bearing and spacer
- Confirmation of idea for model adjustment
- Insertion of composition



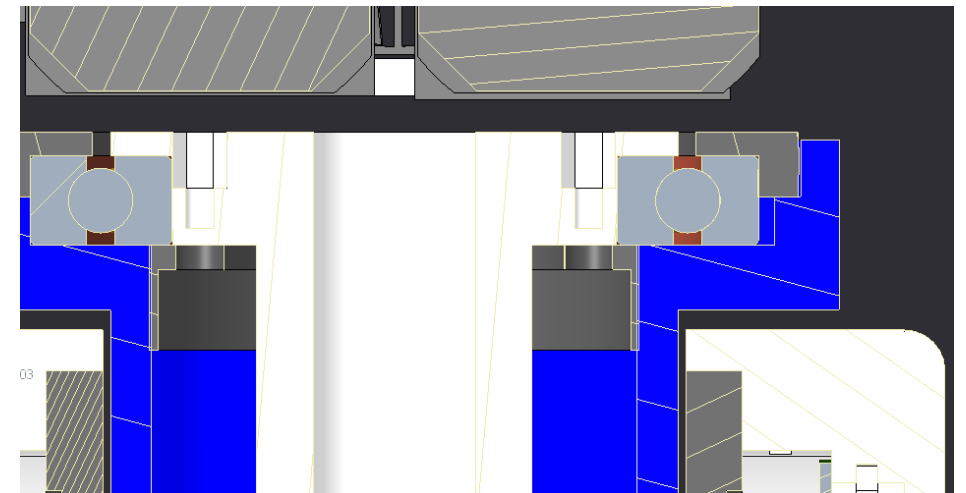
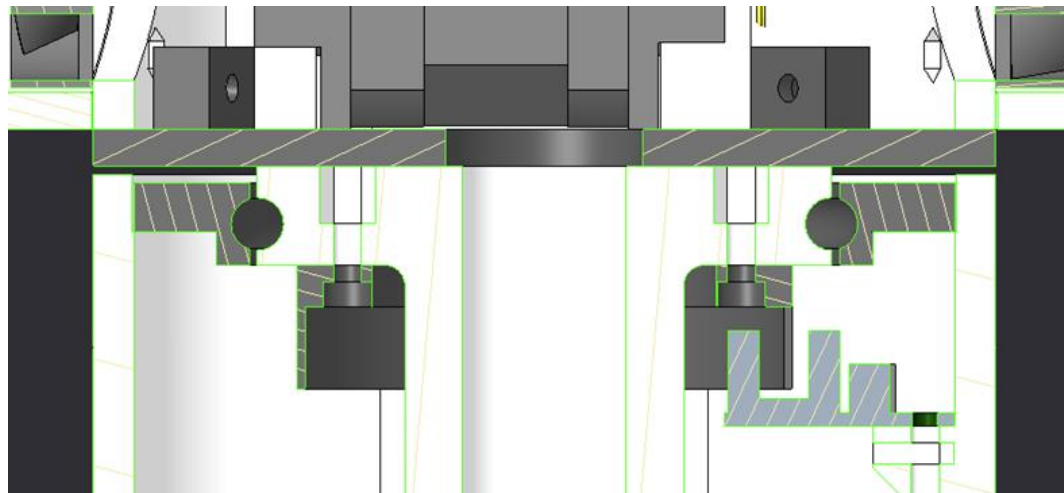
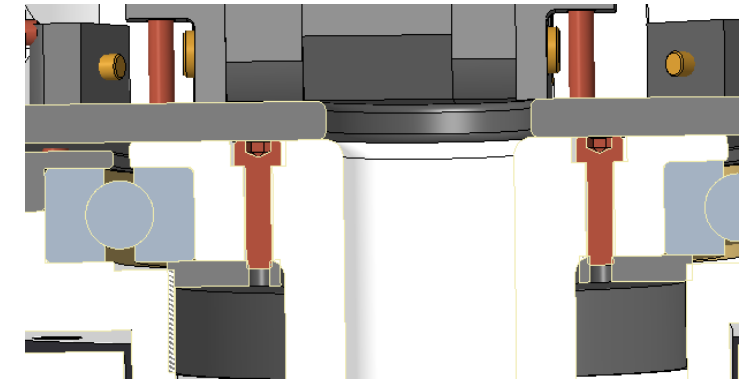
# Adjusting and inserting the radial bearing

- Preparing suggestions for changes and assembly
- Creation of sketches



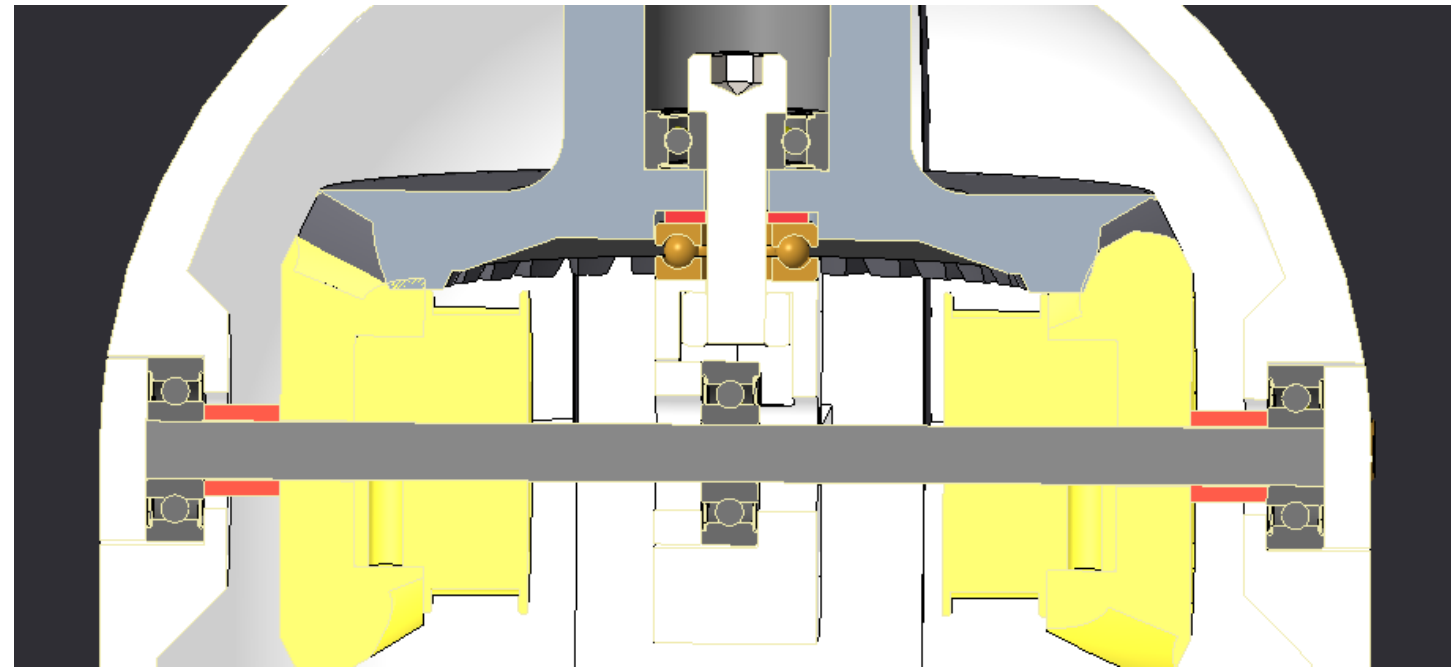
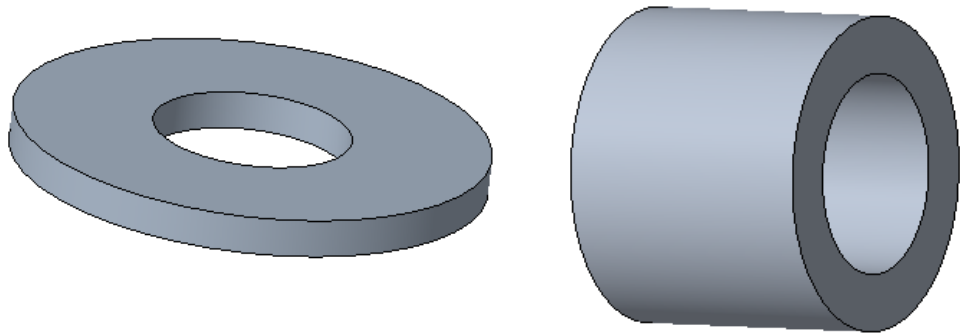
# ART4 Alteration

- Remodeling for instalment of different bearings
- Alteration of screw holes on art3body



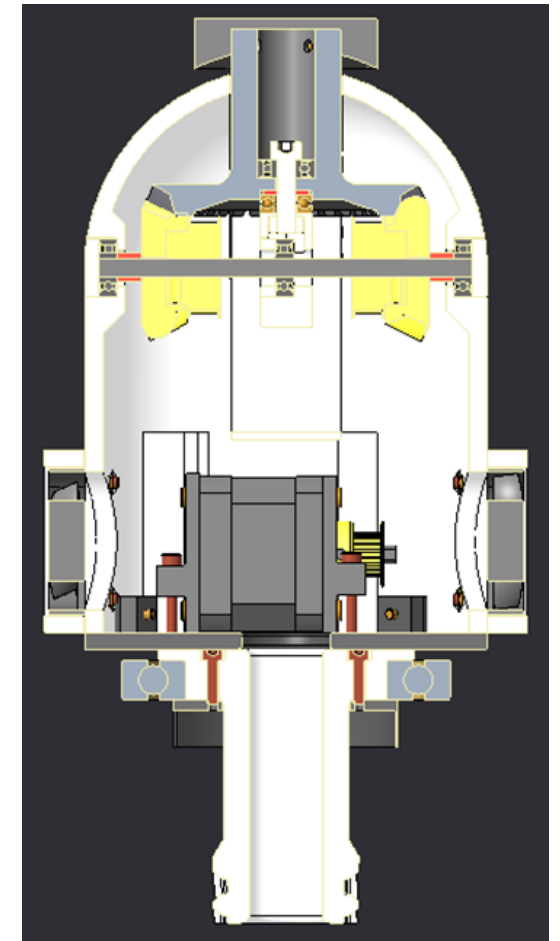
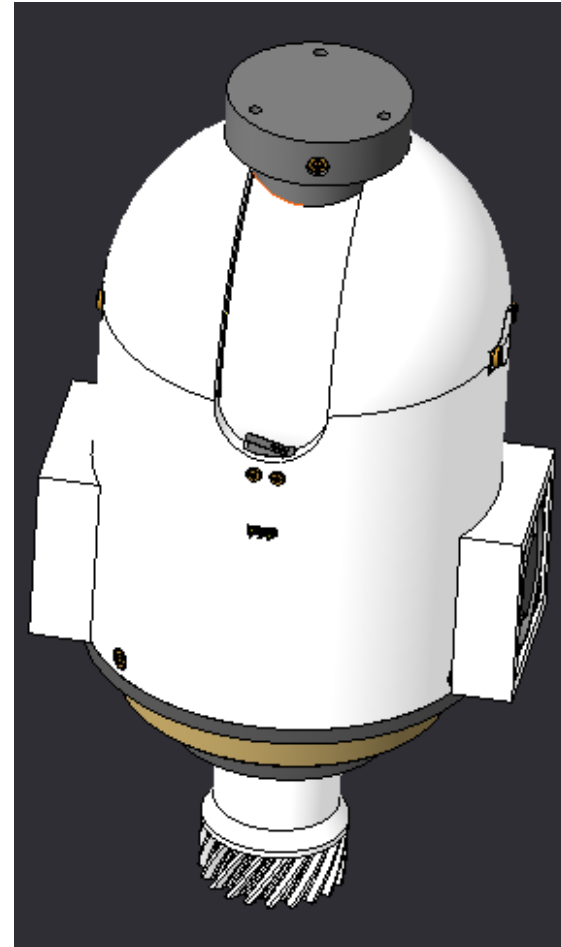
# Making Spacer Models

- Creation and adding of new model of spacer to assembly
- Solution prevents unnecessary pulley movement



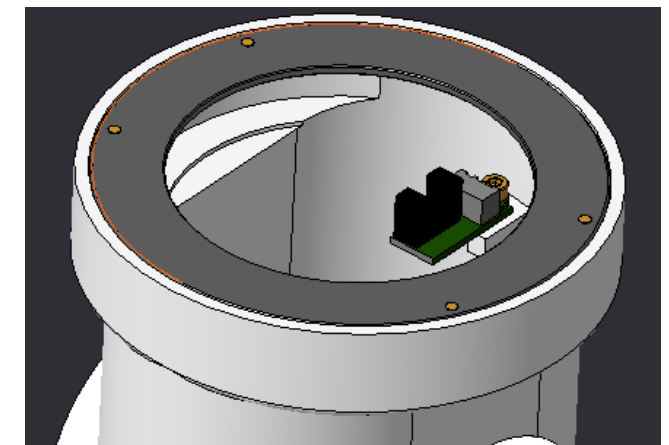
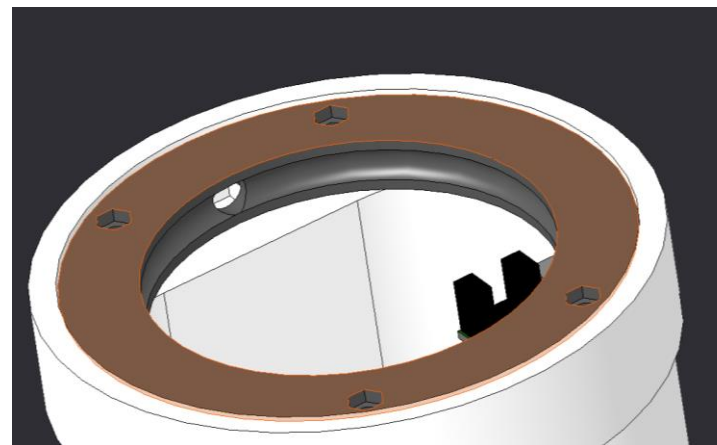
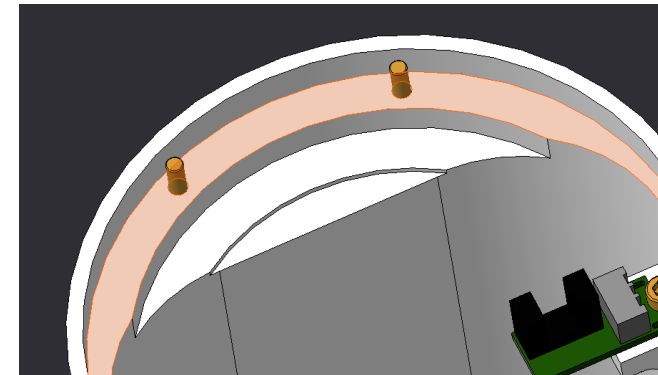
# ART4 Assembly

- Updating of assembly ART4 with all modified models
- Adding of all bolts and nuts



# ART3 Change

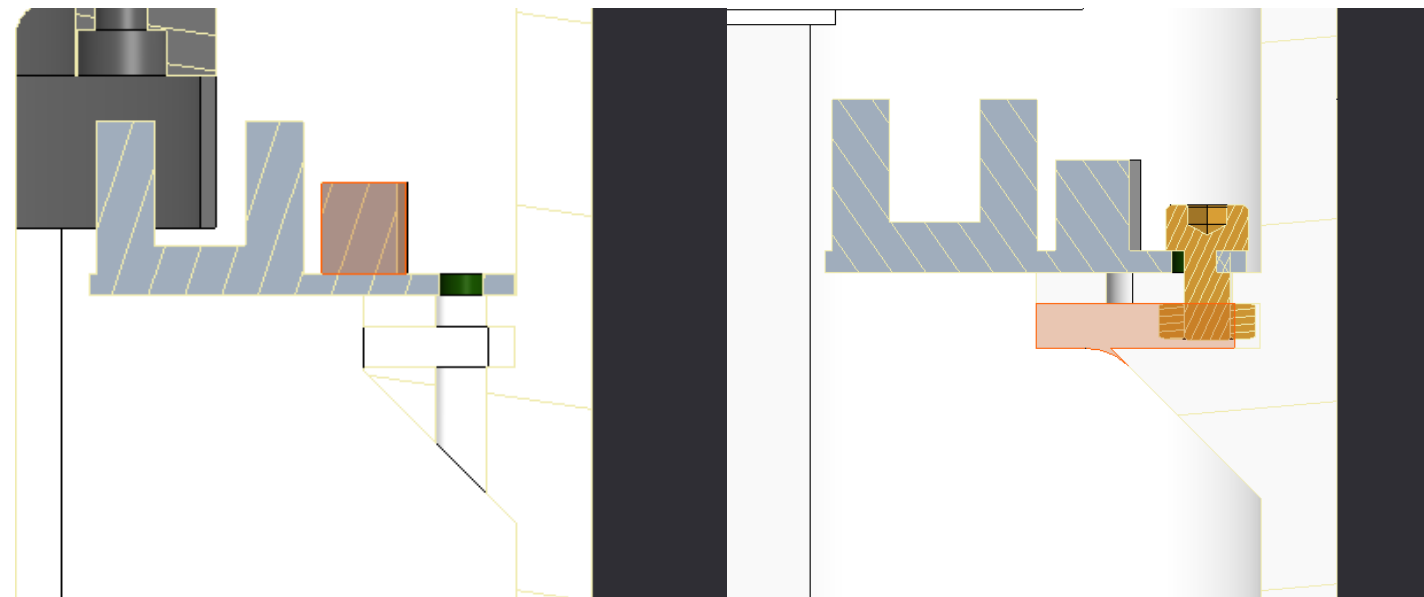
- Positioning of screw holes altered
- Adjustment of plate for insertion of bearing





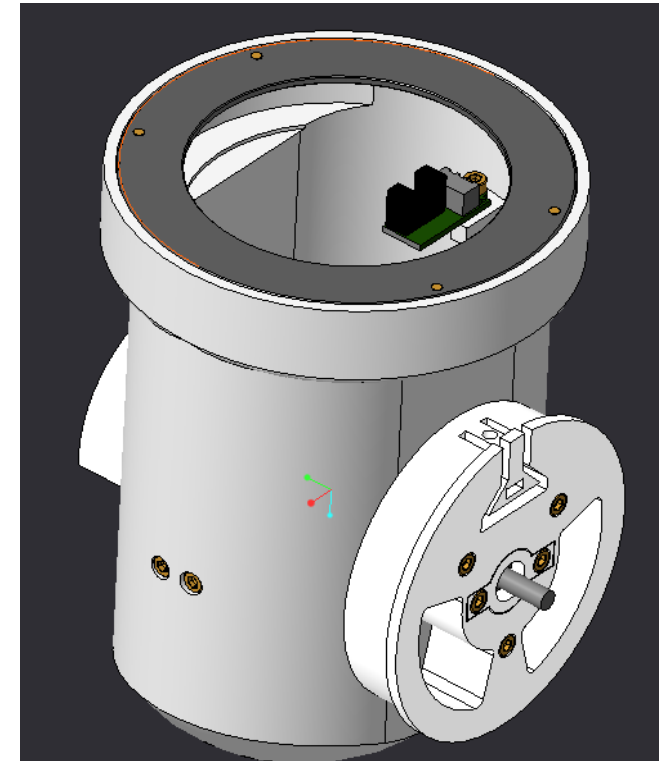
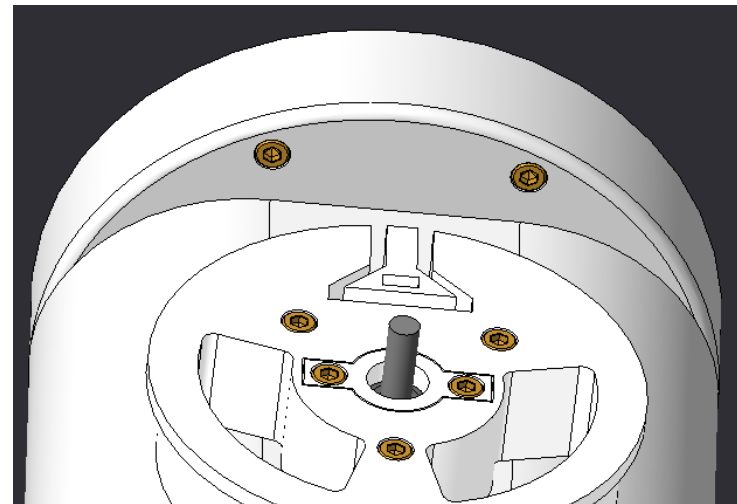
# ART3\_Body Change

- Modification of sensor positioning
- Change of sensor mounting for fine adjustment
- Adding of groove for better adjustment of position sensor during assembly



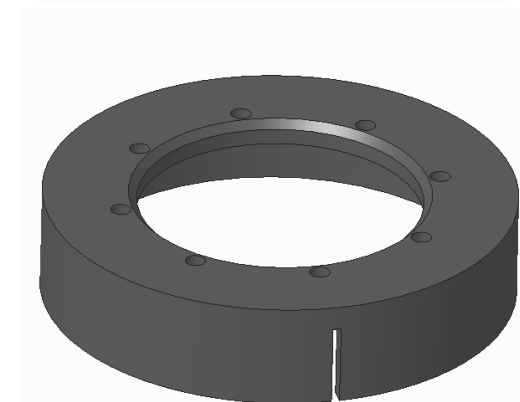
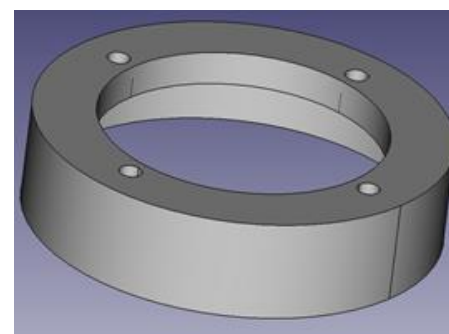
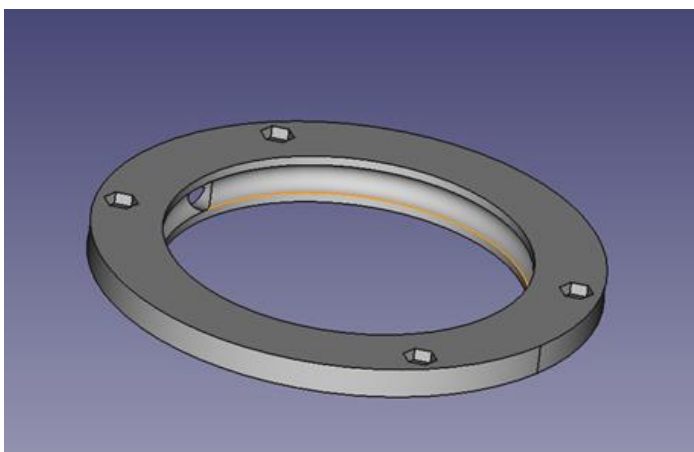
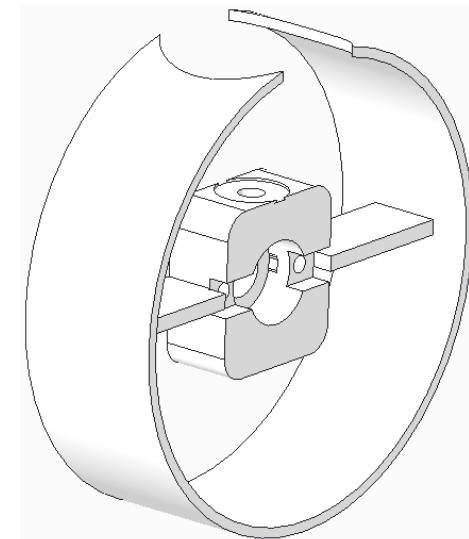
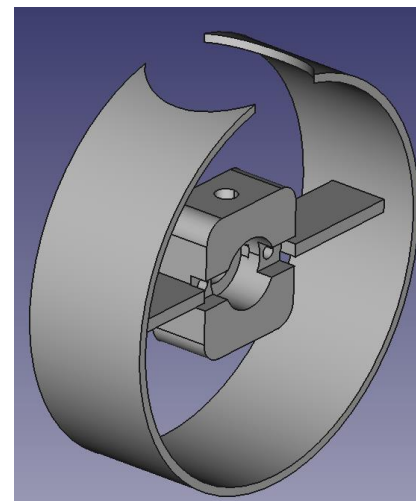
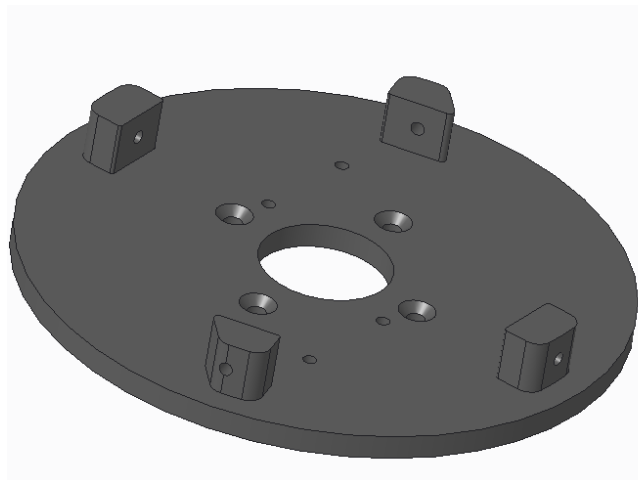
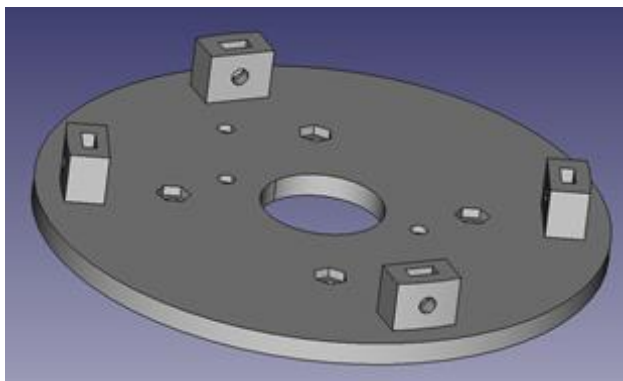
# ART3 Assembly

- Insertion of models with all bolts and nuts
- Verification of fitting

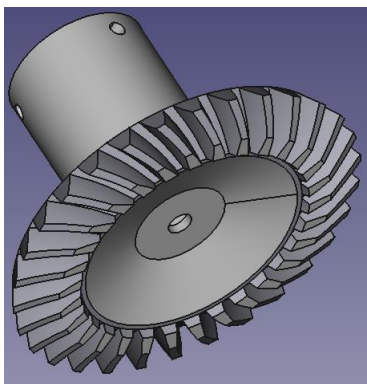
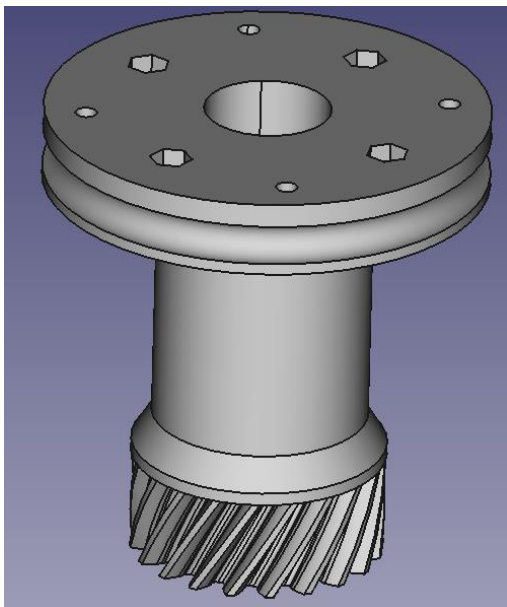


# Before

# After



# Before



# After

