



LTTA – Learning Trainig and Teaching Activity

PROJEKT VACIDE ROBOT THOR

Pivk Aljaž

Basebot

I redraw the piece from the original and made it possible to be milled in CNC

M3 screw holes on inner side, rounding R8 on outer side

Mounting for sensor with M3 screw holes

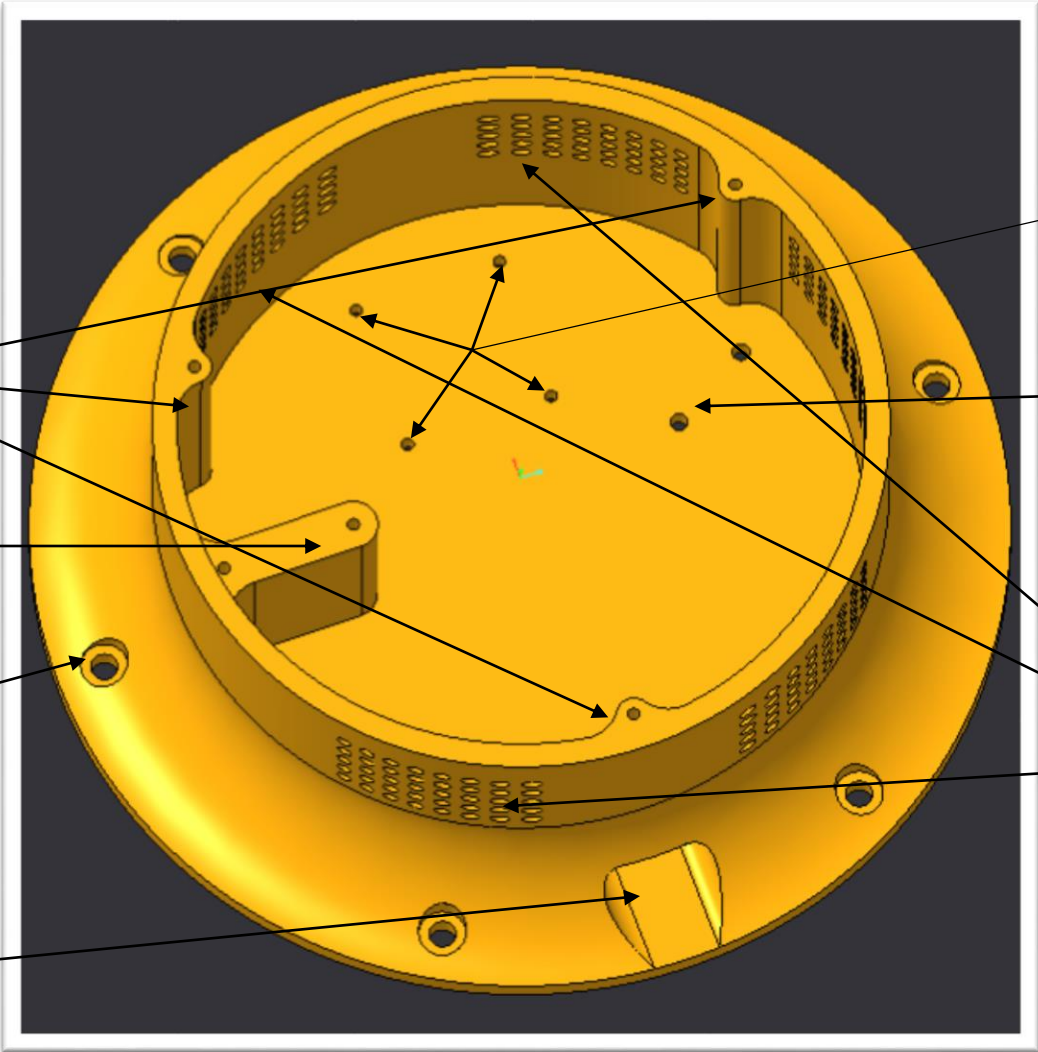
Holes M5 for mounting the base, groove DIN 74

Hole for cables

Holes for mounting the engine

Holes for mounting the engine

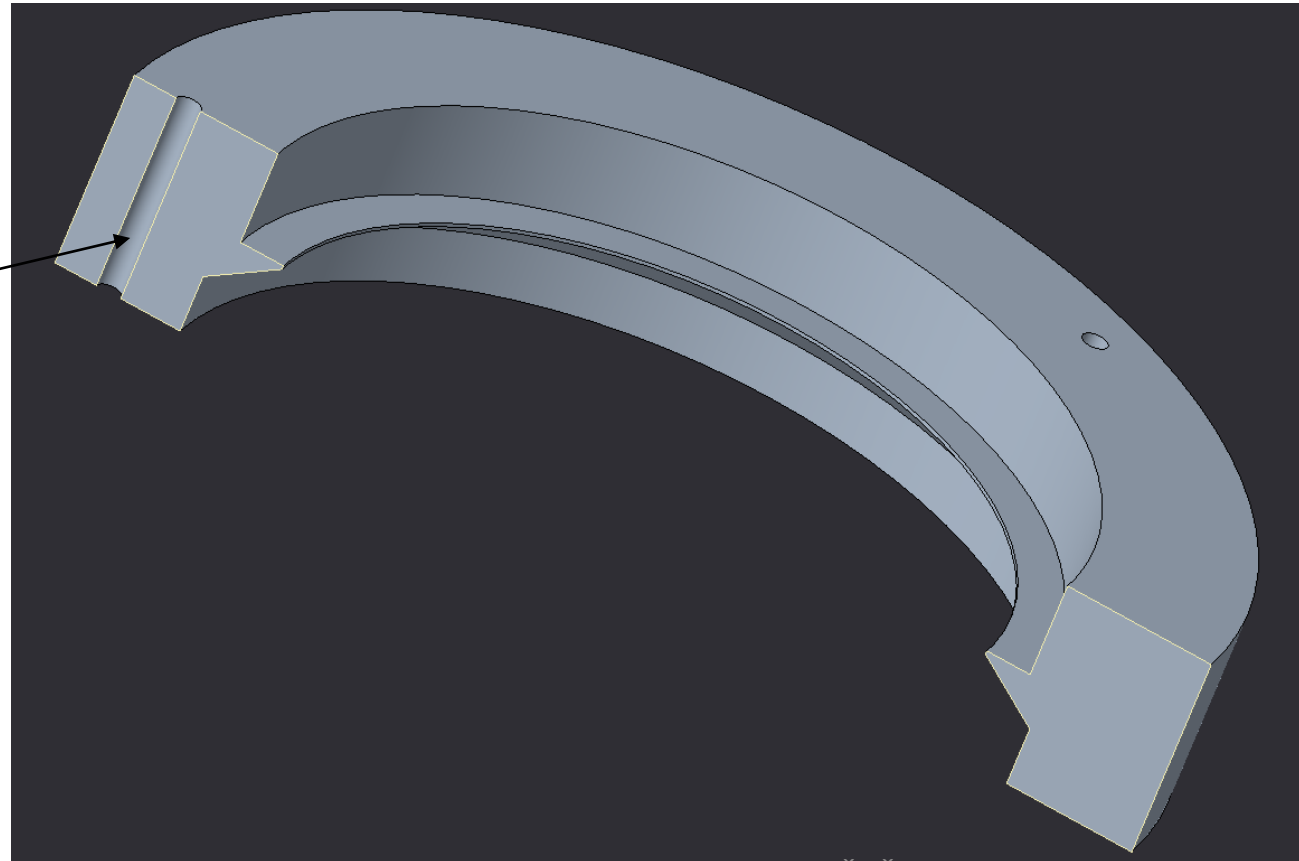
Holes for cooling



Basetop

I picked up the measurements from the model we got and drew the piece again

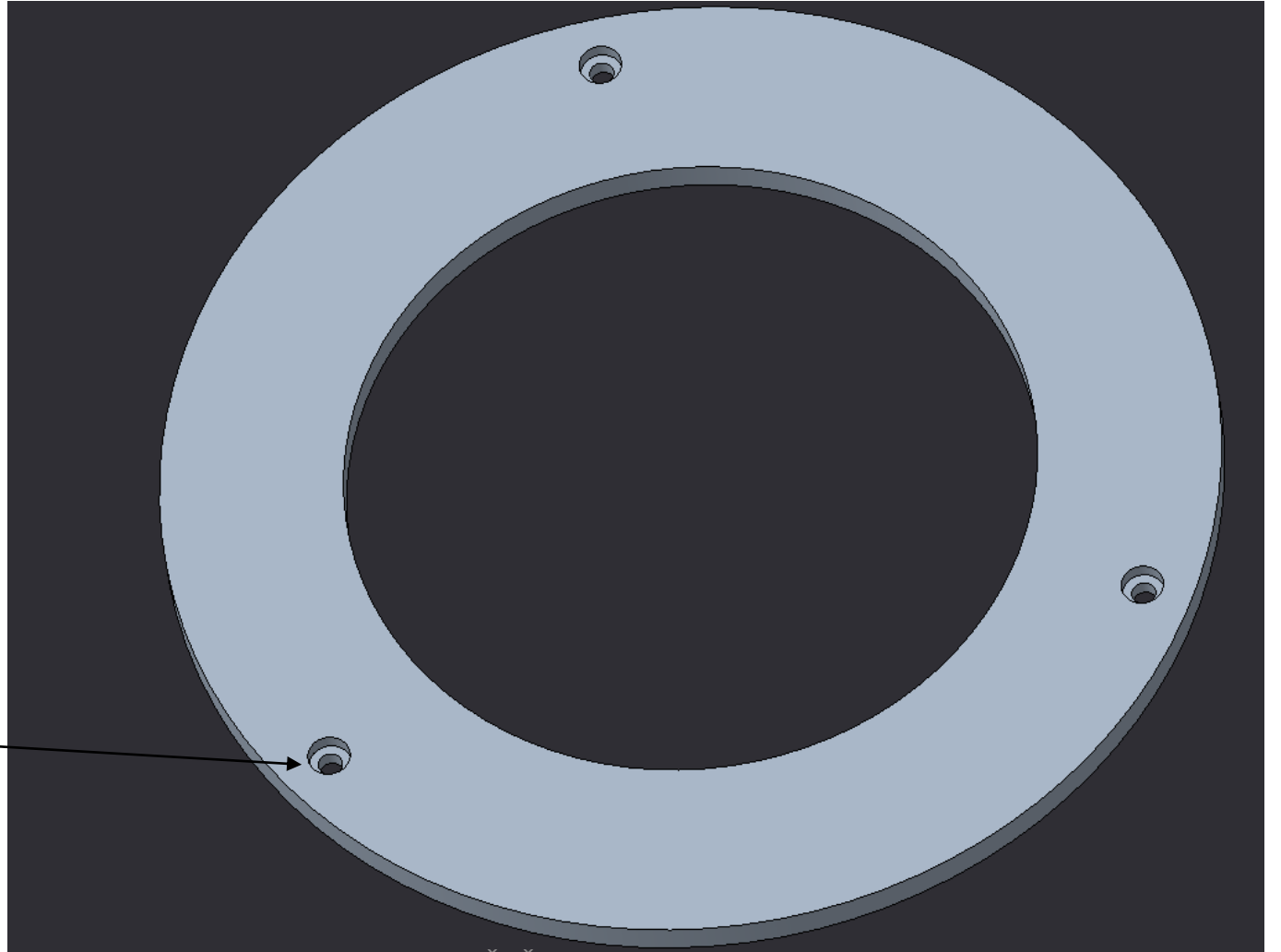
Clerance holle M3



Basebearingfix

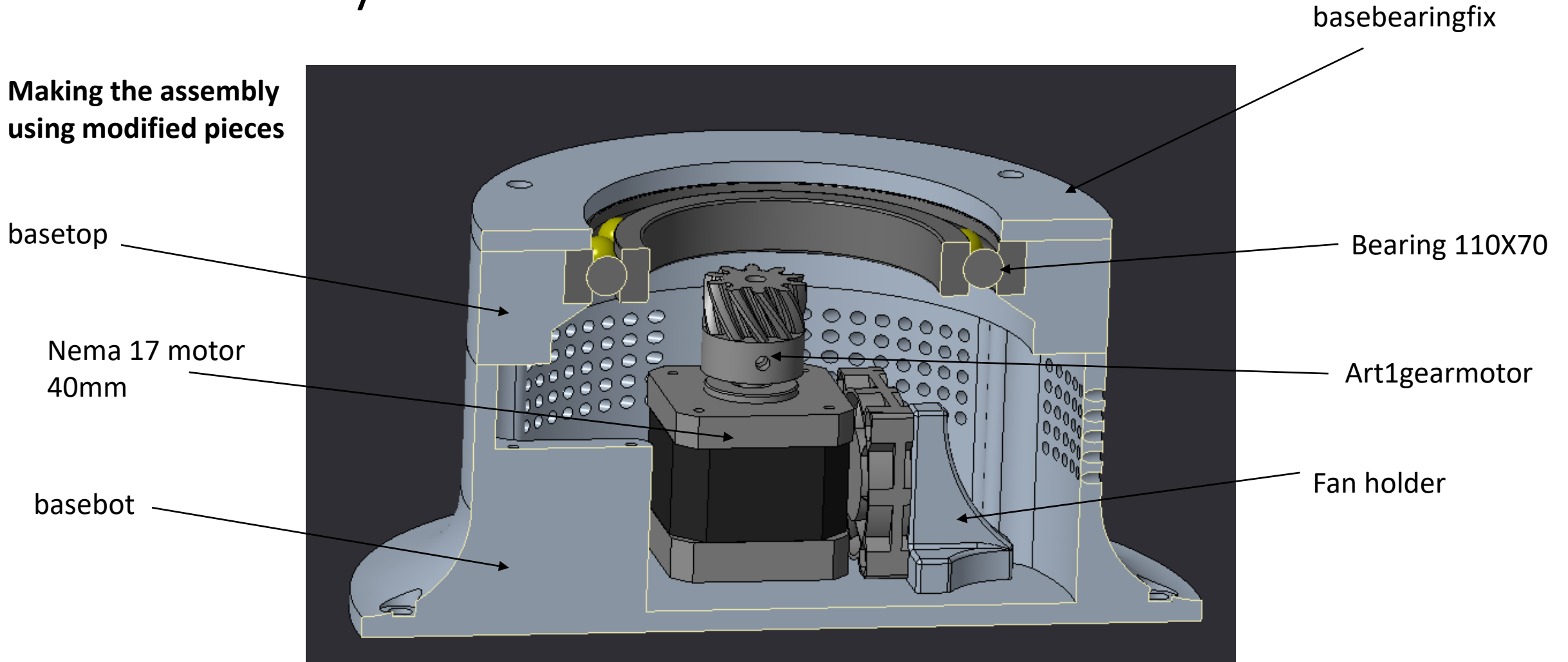
I picked up the measurements from the model we got and drew the piece again

Clarence hole with groove DIN 74



Assembly

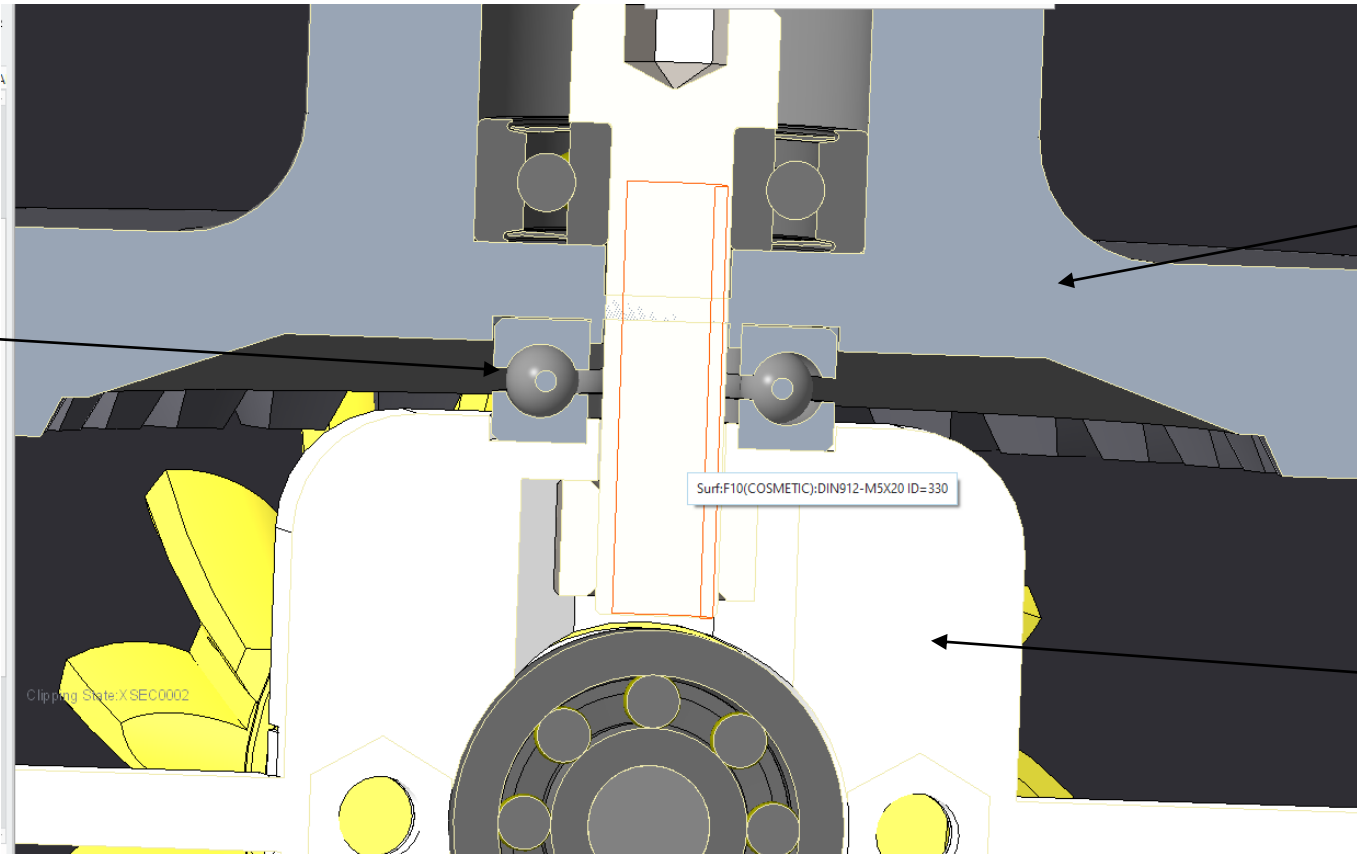
Making the assembly using modified pieces



Art56 Gearplate, Motorcover

Made a groove into which the axial bearing enters

Axial bearing



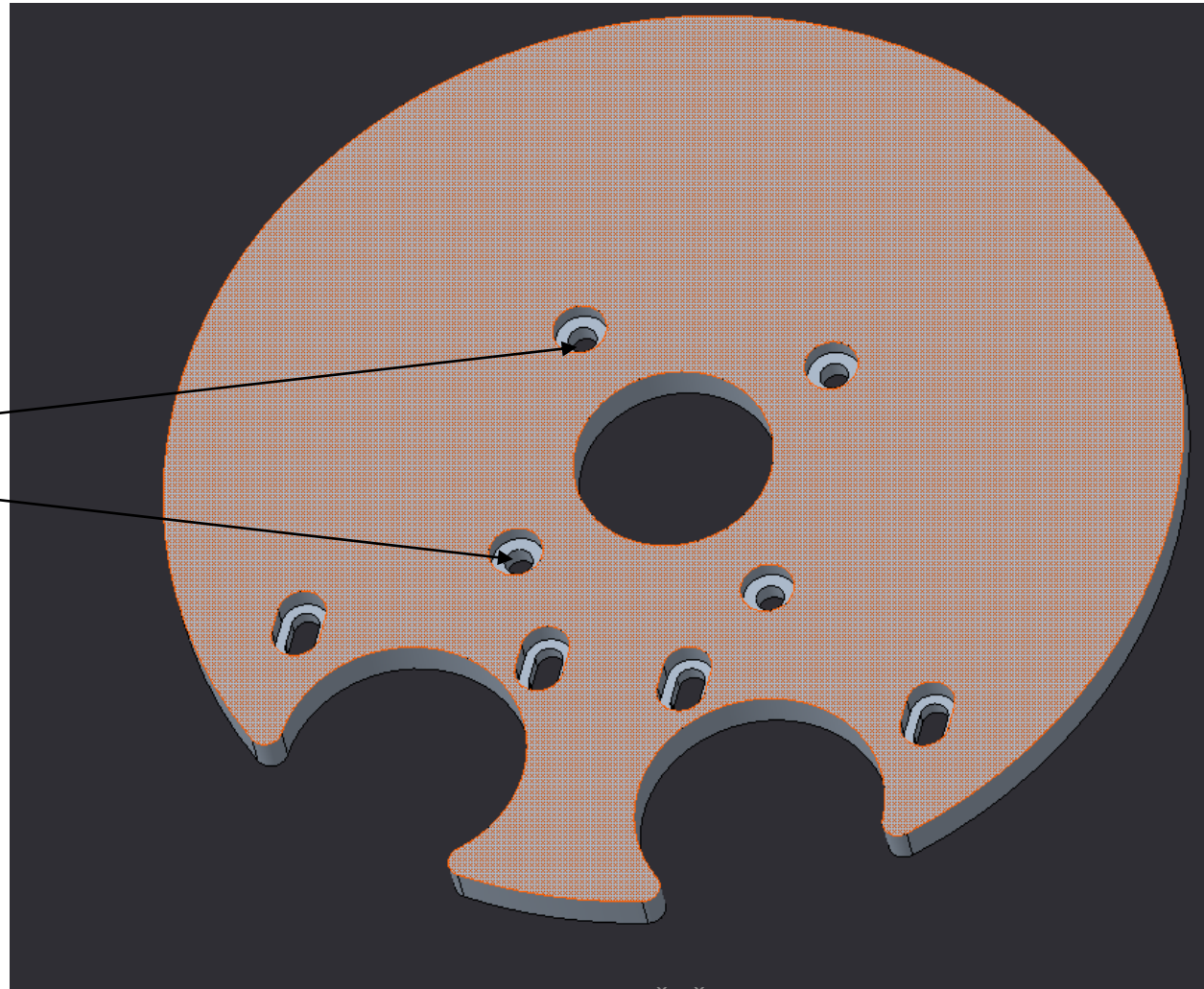
art56gearplate

art56motorcover

Art2bodyAcover1

I picked up the measurements from the model we got and drew the piece again

Clerance holle M3
groove DIN 74



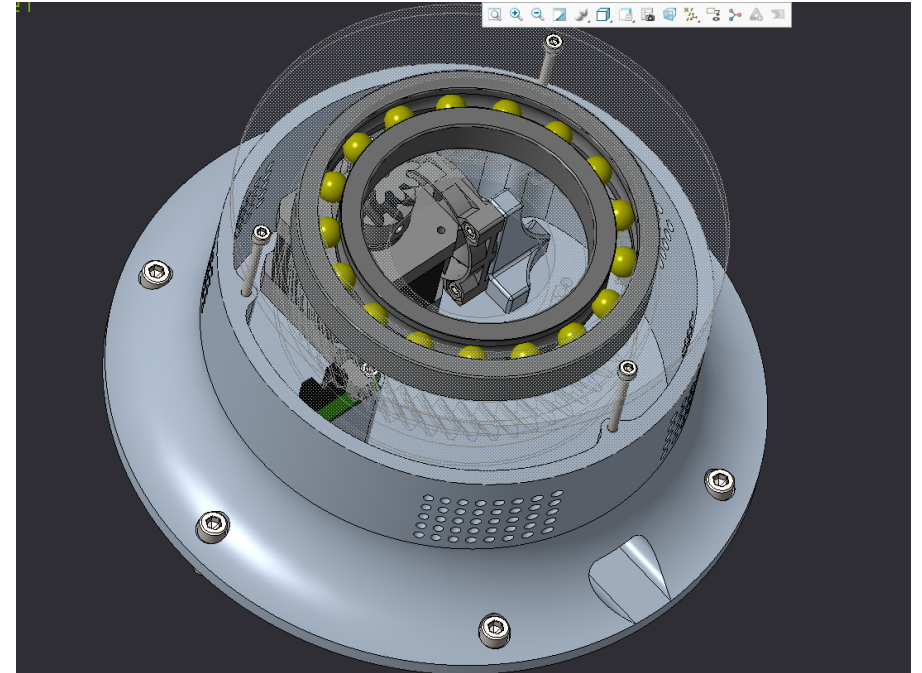
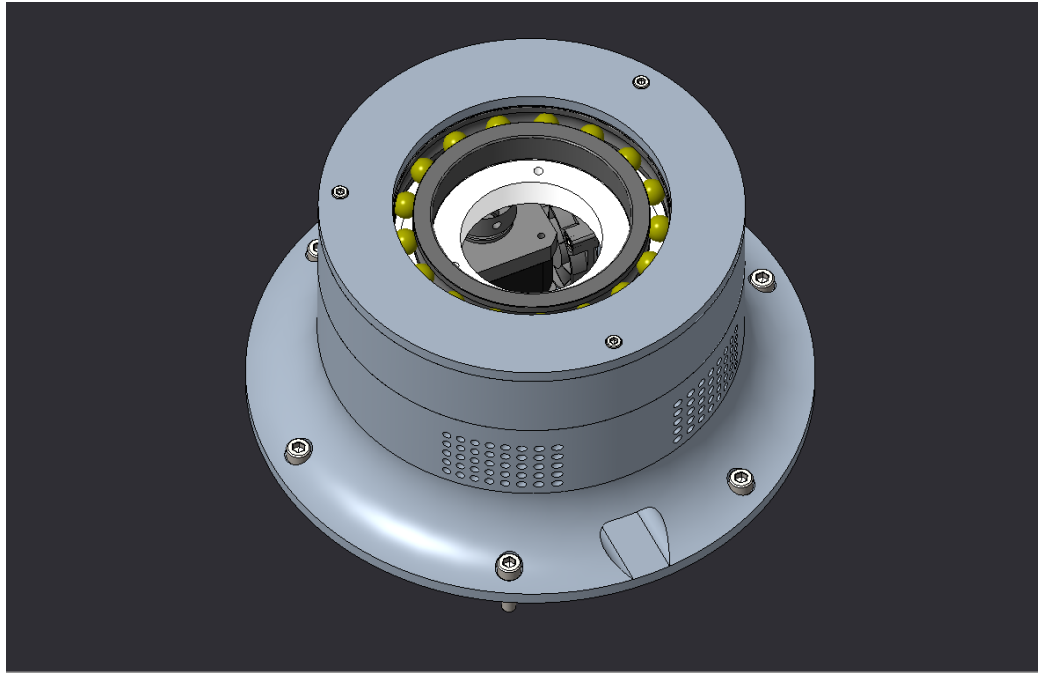
Other

- Created a group on the discord where we have meetings every day and exchange information
- Editing our excel file
- Collected technical drawings of motorcycles and fans

THOR ROBOT BASE

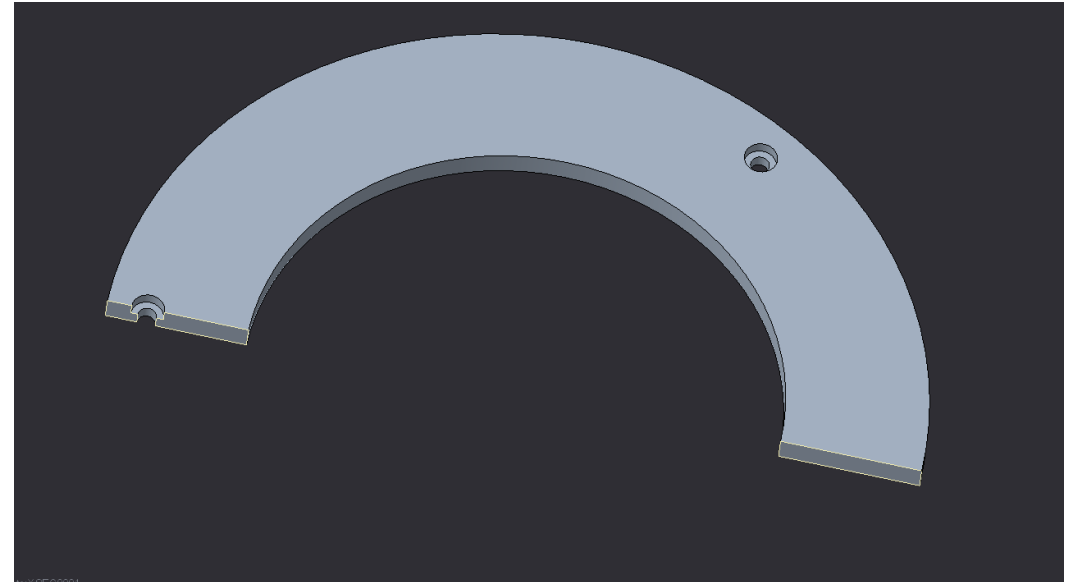
Aljaž Pivk

ASSEMBLY OF BASE



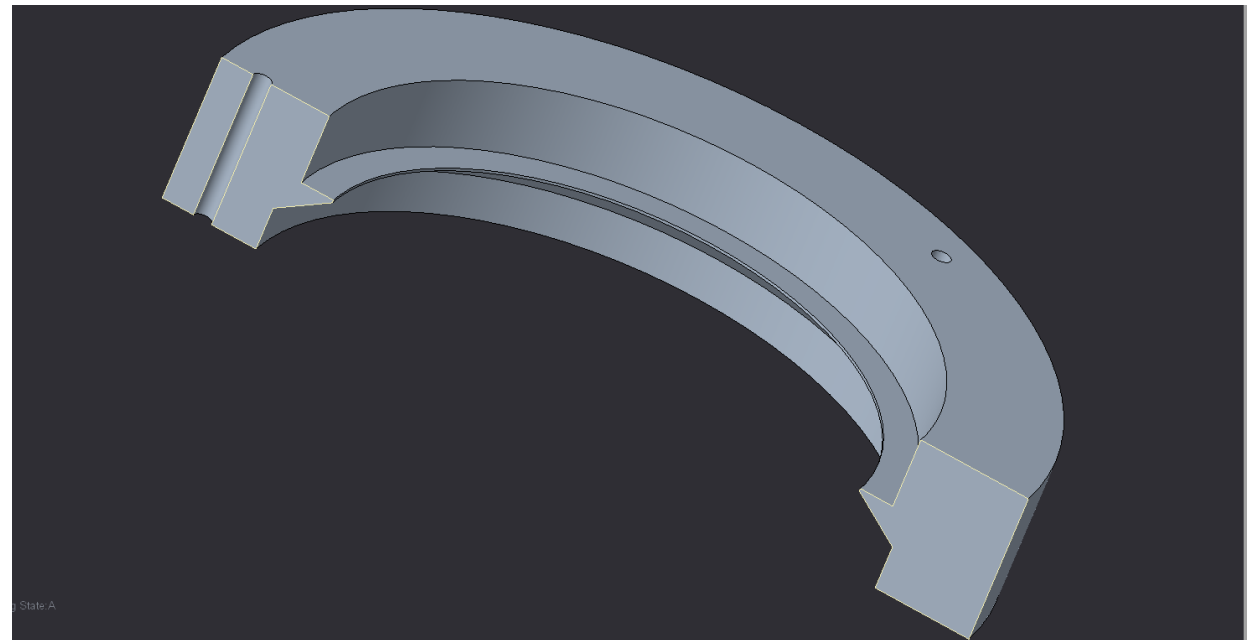
Alteration of Basebearingfix

- Added 3 M3 Clearance holes with counter holes for mounting the pice on Basebot



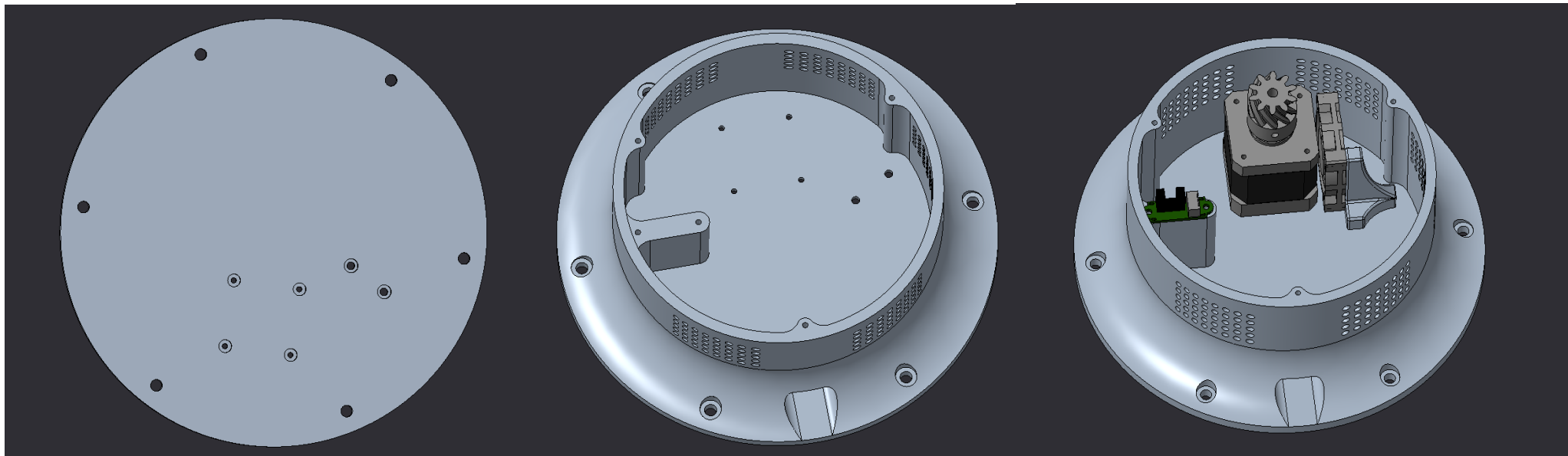
Alteration of Basetop

- Added 3 M3 Clearance holes for mounting the pice on Basebot

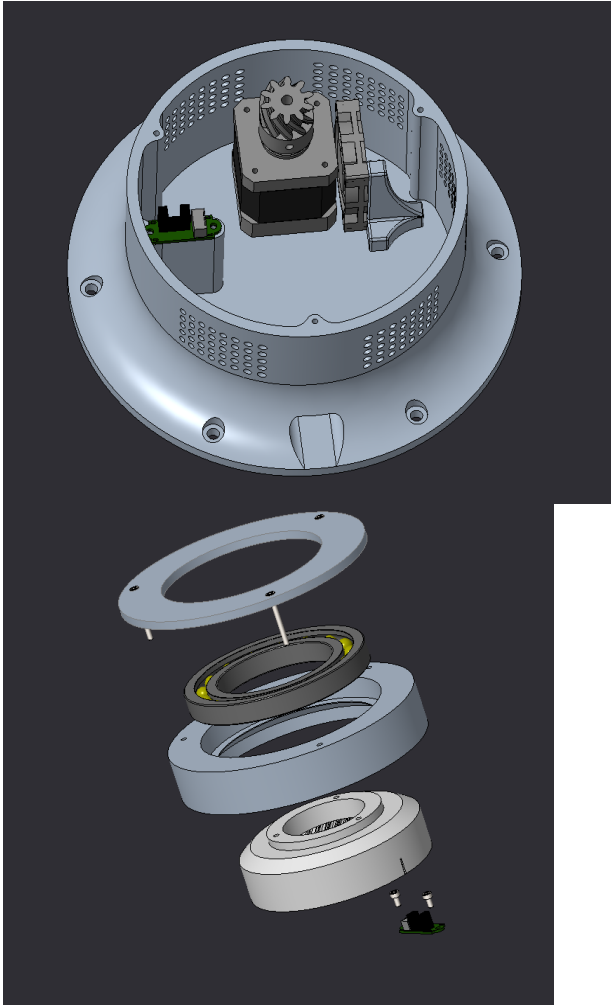


Alteration of Basebot

- Addition of holes to cool the motor
- Added holes for mounting fanholder
- Added holes with which Basebearingfix and basetop get mounted on Basebot
- Rounded the corners so that the piece can be milled on CNC



Assembly of base bot



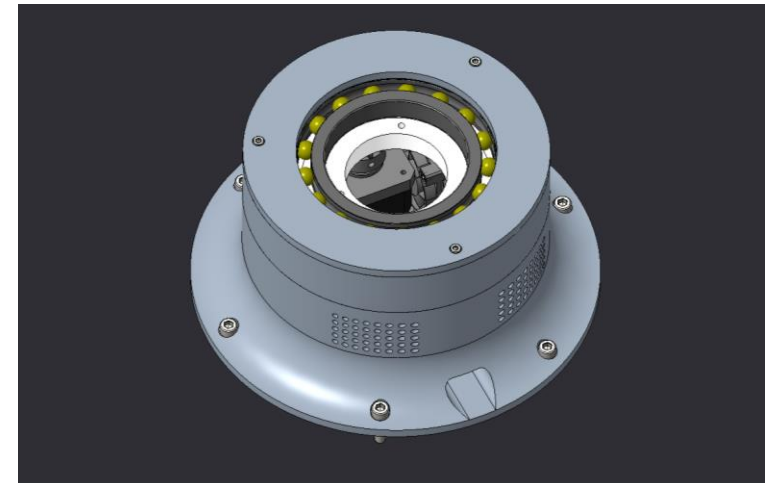
Firstly the motor is screwed to the basebot.

Secondly we assemble fanholder and fan and screw that to basebot aswell.

Then optoswitch is screwd in place.

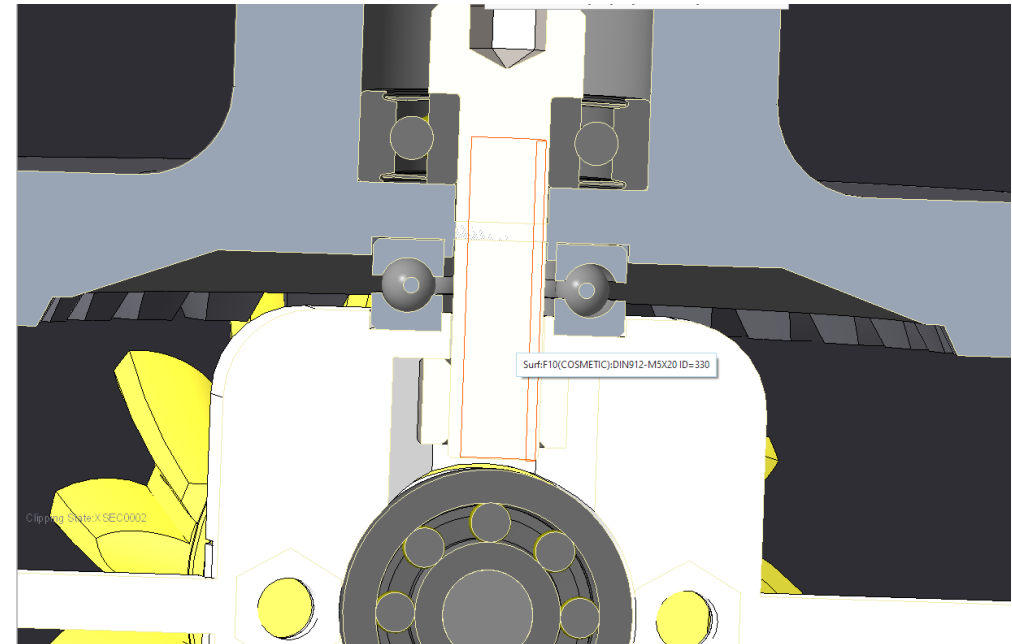
Lastly a bearing is put betwen Basebearingfix and basetop.

Then everyting gets screwd together onto Basebot.



modifying Art54gearplate and Art54motorcover

- Made a slot in Art54gearplate and Art54motorcover into which goes an axial bearing



Other

- Made a table in excel which contains all screws used in the robot
- Copied technical documentation of motors and fans into a folder

vijaki za nabavo				Matice za nabavo				Sklop:		
vijaka	dolžina	količina	Opomba	Standard vijaka	Navoj	količina	Opomba	Standard	Vijak	Koli
DIN 912	M2x6	2		DIN 934-8-10	M2	2		DIN 912	M2x10	21
DIN 912	M2x10	2		DIN 934-8-10	M3	53		DIN 912	M3x6	23
DIN 912	M3x6	26		DIN439_B	M3	6		DIN 912	M3x8	12
DIN 912	M3x8	27		DIN439_B	M4	1		DIN 912	M3x10	21
DIN933	M3x8	1		DIN 934-8-12	M6	4		DIN 912	M3x14	12
DIN 912	M3x10	13		Vložki vijaka	M3	4	Vtisk v plastiko	DIN 912	M3x18	41
DIN 912	M3x14	12						DIN 912	M3x25	71
DIN7991	M3x16	8	Vijak z vgrezjeno glavo	DIN125A		4	Podložka	DIN 912	M5x25	11
DIN 912	M3x18	4						DIN 799111	M3x25	41
DIN 912	M3x20	10								
DIN 912	M3x25	10								
DIN 912	M3x30	4								
DIN 912	M3x35	3								
DIN 912	M3x45	10								
DIN 912	M3x50	11								
DIN 912	M4x12	4								
DIN 912	M4x20	4								
DIN 912	M5x20	1								
DIN 913	M5x20	6								



LTTA – Learning Trainig and Teaching Activity

THANK YOU FOR YOUR ATENTION!